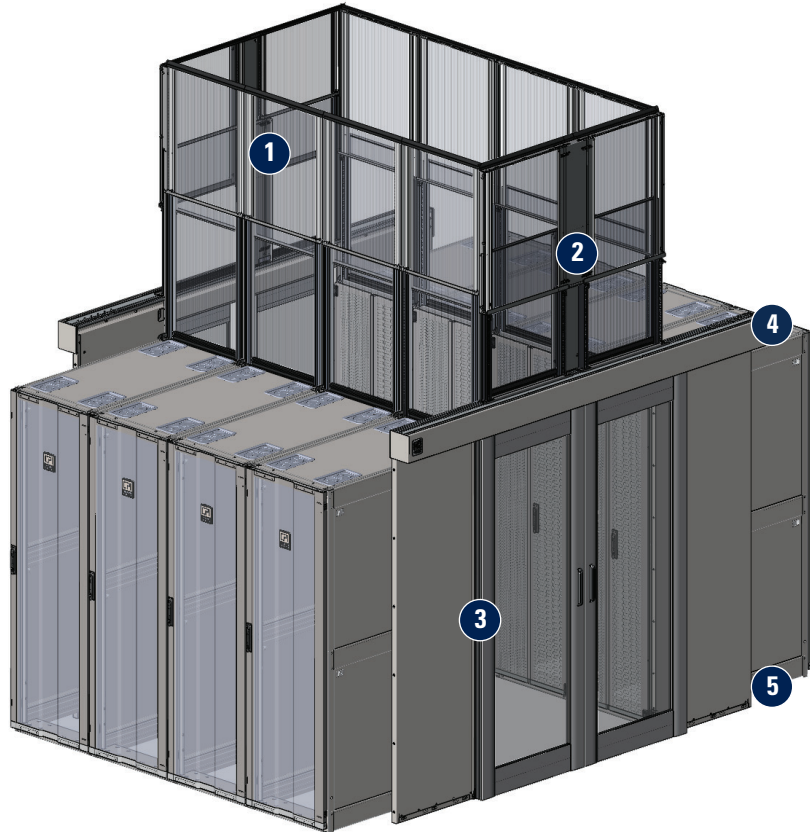




CHATSWORTH
PRODUCTS

Elevate™ Adjustable Containment Solution for Hot Aisle Containment (HAC)

Elevate™ Adjustable Containment Solution for Hot Aisle Containment offers a cutting-edge approach to improve data center efficiency through effective hot air management. This innovative system links two rows of cabinets, forming a sealed pathway that channels hot air from the cabinet tops to an overhead drop ceiling. This creates an efficient closed hot air return system. The solution features a telescoping two-piece panel that precisely fits between the cabinet roof and the ceiling, allowing for seamless adjustment to form a duct connecting the ZetaFrame® cabinet to the ceiling and eliminating the need for custom modifications on-site.



- 1 (14500-XXX) Adjustable Containment Solution Panels** – Adjustable panels mount effortlessly on top of a row of cabinets to create a Hot Aisle Containment Duct. The panels feature a unique telescoping design that allows infinite adjustment within the specified height range. Panels are sized to match the width of each cabinet. One panel is required per cabinet.
- 2 (14625-XXX) Adjustable Containment Solution End of Row Panels** – Panels span across the aisle between two rows of cabinets to create a Hot Aisle Containment Duct. The telescoping panels allow infinite adjustment within the specified height range. The panels mount to the top of Aisle Containment Double Door Assemblies (32770-XXX). Panel size options allow rear frame alignment or mid-span alignment for 1200 mm – 1100 mm depth cabinets.
- 3 Aisle Containment Door Assembly** – Sliding double doors (shown) or single door, both with automatic closing feature and large transparent panel(s). Doors attach to the cabinets at the ends of the aisle to seal the ends of the contained aisle. To simplify installation, a reusable Floor Mounting Template is also available.
- 4 Door Mounting Bracket Kit (not shown)** – Adjustable height brackets used to attach the Aisle Containment Door Assembly to the tops of cabinets.
- 5 Aisle Containment Cabinet To Floor Seal Kit (not shown)** – Cabinet-specific trim panels used along the base of cabinets to seal the gap between the floor and the bottom of the cabinet frame.

Containment Accessories
• Floor Mounting Template
• Brush Kit

Cabinet Accessories
• Snap-In Filler Panels
• Raised Floor Grommet

Availability: US, Canada, Latin America, Europe, Middle East & Africa

United States & Canada
Simi Valley, CA
800-834-4969
Toronto, Ontario, Canada
+905-850-7770
chatsworth.com
techsupport@chatsworth.com

Latin America
Mexico City, Mexico
+52-55-5203-7525
Toll Free within Mexico
800-201-7592
chatsworth.com.co

Europe
Buckinghamshire
England, UK
+44-1628-524-834

Middle East & Africa
Dubai, UAE
+971-4-2602125
Doha, Qatar
+974-4-267422

Asia Pacific
Jing'an District,
Shanghai, China
+86 21 6880-0266
chatsworth.com.cn

SOLUTION OVERVIEW

The Adjustable Containment Solution, designed for hot aisle containment, offers flexible mounting options, including rear frame alignment for maximum space utilization for infrastructure or a mid-span option for maximum duct size. Its versatile configuration effectively contains the aisle and is compatible with standard End Of Row doors, ensuring a cohesive and effective containment strategy.

•Telescoping Design:

- Versatile design that easily adjusts to form a duct connecting the ZetaFrame cabinet to the ceiling
- Flexibility to adjust the containment height as needed, minimizing complexity and maximizing efficiency

•Time to Deploy:

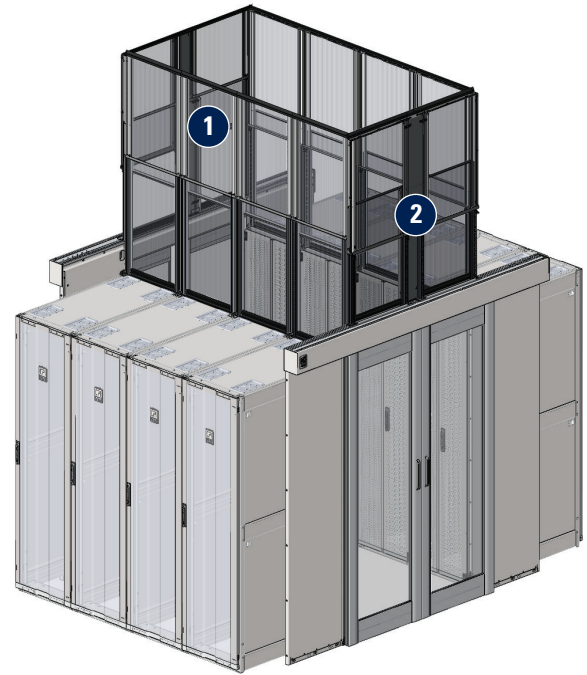
- Pre-assembled panels, no on-site fabrication required for frames or panels
- No drilling required, mounts to ZetaFrame top track
- Mounting hardware pre-loaded onto part
- Engineered for quick setup - less than 2 minutes per panel per cabinet
- Reduced deployment times

•Ease of Specification:

- Width sizes matched to standard ZetaFrame cabinet widths
- Telescoping design in 3 height ranges
- Supports hot aisle containment or row level vertical exhaust duct applications
- Streamlined experience with our ZetaFrame cabinet-supported containment solution

•Serviceability:

- Sliding service panel allows access to cabling infrastructure and other overhead structures
- Options for alignment to frame rear or cabinet mid-point for maximum airflow



ORDERING INFORMATION

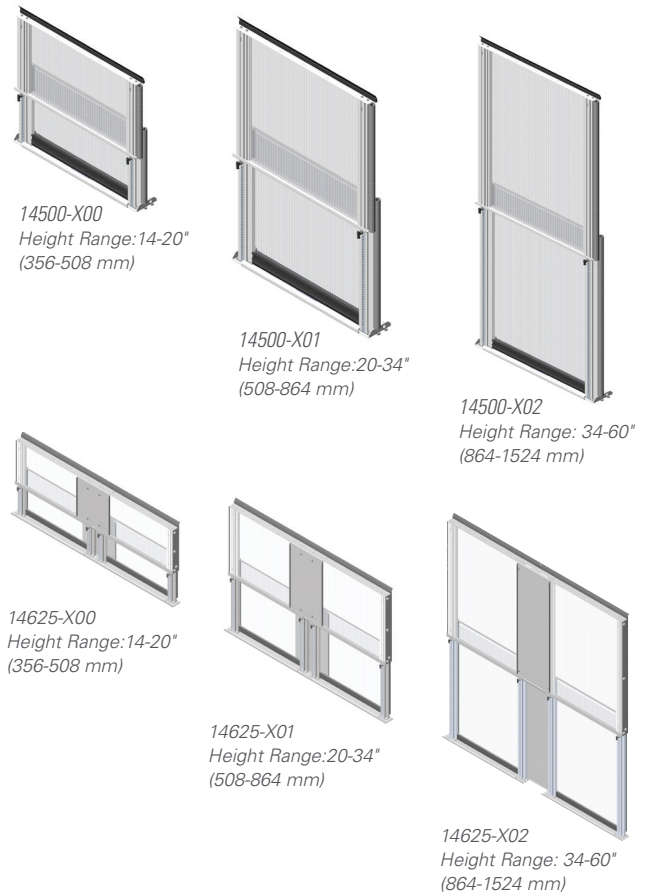
1 Adjustable Containment Solution Panel for ZetaFrame Cabinet					
Part Number – Cabinet Width				Height in (mm)	Shipping Weight lb (kg)
23.6" W (600 mm)	27.6" W (700 mm)	29.5" W (750 mm)	31.5" W (800 mm)		
14500-X00	14500-X03	14500-X09	14500-X06	14-20 (356-508)	18.8 (8.5)
14500-X01	14500-X04	14500-X10	14500-X07	20-34 (508-864)	23.9 (10.8)
14500-X02	14500-X05	14500-X11	14500-X08	34-60 (864-1524)	28.9 (13.1)

Note: X=Color: 7=Black, E=Glacier White.

Shipping weights are for 800 mm configurations. Depth: 4.38" (111.3 mm)

2 Adjustable Containment Solution End of Row Panel for ZetaFrame Cabinet				
Part Number	Height Range in (mm)	Width in (mm)	Depth in (mm)	Shipping Weight lb (kg)
14625-X00	14-20 (356-508)	49.9 (1414.8)	3.96 (100.6)	41.8 (19.0)
14625-X01	20-34 (508-864)	49.9 (1414.8)	3.96 (100.6)	77.5 (35.2)
14625-X02	34-60 (864-1524)	49.9 (1414.8)	3.96 (100.6)	83.8 (38.0)
14625-X03	14-20 (356-508)	57.8 (1614.0)	3.96 (100.6)	67.2 (30.5)
14625-X04	20-34 (508-864)	57.8 (1614.0)	3.96 (100.6)	81.1 (36.8)
14625-X05	34-60 (864-1524)	57.8 (1614.0)	3.96 (100.6)	87.8 (39.8)
14625-X06	14-20 (356-508)	90.0 (2623.8)	3.96 (100.6)	78.0 (35.4)
14625-X07	20-34 (508-864)	90.0 (2623.8)	3.96 (100.6)	92.7 (42.0)
14625-X08	34-60 (864-1524)	90.0 (2623.8)	3.96 (100.6)	111.8 (50.7)

Note: X=Color: 7=Black, E=Glacier White.

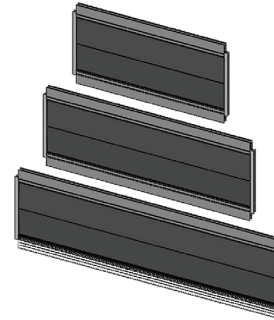


ACCESSORIES

Adjustable Containment Solution Brush Kit

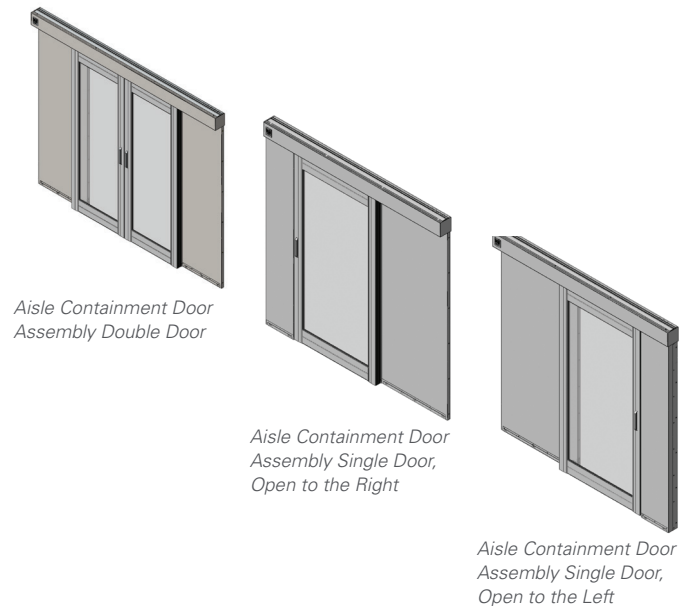
The ACS Brush Kit provides a penetration port through the 6 mm double wall polycarbonate panel for cabling infrastructure. When properly installed, the ACS brush kit will limit air leakage through the penetration and provide edge trim to protect cabling from sharp edges. Install the ACS brush kit in a restricted service environment, such as a data center. Use indoors only, in environmentally controlled areas; do not use outdoors, in harsh environments or in air-handling spaces. The ACS brush kit is sized for use with standard cable runway sizes: 12", 18", and 24" width.

Adjustable Containment Solution Brush Kit	
Part Number	Description
14590-001	Adjustable Containment Solution Brush Kit for 12" Cable Runway; 8.7" H x 16.75" W x 0.46" D (221 x 425.5 x 11.7); For .24" (6 mm) Panels; Black
14590-002	Adjustable Containment Solution Brush Kit for 18" Cable Runway; 8.7" H x 22.75" W x 0.46" D (221 x 577.9 x 11.7); For .24" (6mm) Panels; Black
14590-003	Adjustable Containment Solution Brush Kit for 24" Cable Runway; 8.7" H x 28.75" W x 0.46" D (221 x 730.3 x 11.7); For .24" (6mm) Panels; Black



Aisle Containment Door Assembly	
Part Number	Description
32770-X01	Double Door, with Painted Door Frames
32770-X02	Double Door, with Anodized Aluminum Door Frames
32780-X02	Single Door, opens to the Right, with Painted Door Frames
32780-X04	Single Door, opens to the Right, with Anodized Aluminum Door Frames
32780-X02	Single Door, opens to the Left, with Painted Door Frames
32780-X02	Single Door, opens to the Left, with Anodized Aluminum Door Frames

Note: X=Color: 7=Black, E=Glacier White.



Door Mounting Bracket Kit	
Part Number	Description
32805-X00	3" H (75 mm), For 85.3"-91.4" H (2167 mm-2322 mm) Cabinets
32805-X01	5" H (125 mm), For 82.6"-94.2" H (2098 mm-2393 mm) Cabinets
32805-X02	10" H (254 mm), For 77.8"-98.9" H (1976 mm-2512 mm) Cabinets

Note: X=Color: 7=Black, E=Glacier White.



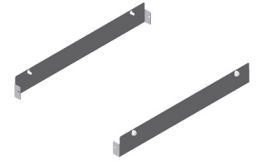
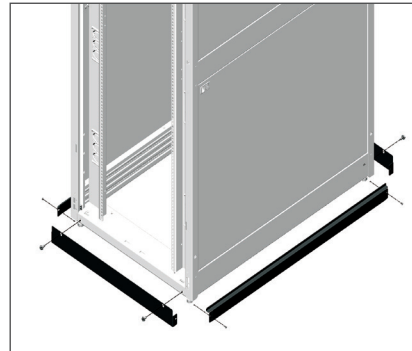
ACCESSORIES

Cabinet To Floor Seal Kits

Place at the bottom of cabinets to seal the space between the bottom of the cabinet and the floor when leveling feet or casters are in use. Ideal for aisle containment applications.

Aisle Containment Cabinet To Floor Seal Kits Floor Seal Kits for ZetaFrame Cabinet	
Part Number	Description
39996-X00	Front & Rear, for 23.6"W (600 mm) Cabinet
39996-X01	Front & Rear, for 27.6"W (700 mm) Cabinet
39996-X02	Front & Rear, for 29.5"W (750 mm) Cabinet
39996-X03	Front & Rear, for 31.5"W (800 mm) Cabinet
39997-X00	Side Seals, for 31.5"D (800 mm) Cabinet
39997-X08	Side Seals, for 39.4"D (1000 mm) Cabinet
39997-X10	Side Seals, for 41.3"D (1050 mm) Cabinet
39997-X12	Side Seals, for 43.3"D (1100 mm) Cabinet
39997-X16	Side Seals, for 47.2"D (1200 mm) Cabinet

Note: X=color: 7=Black, E=Glacier White.



Aisle Containment
Cabinet to Floor Front
Seal Kit for ZetaFrame
Cabinet

Containment Accessories

Use the Floor Mounting Template to locate door mounting holes on the floor.

Floor Mounting Template	
Part Number	Description
32875-701	For Aisle Containment Double-Door, Black
32875-702	For Aisle Containment Single-Door, Black



Thermal Management Accessories

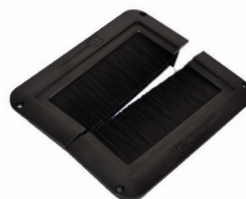
To maximize performance of the containment solution, it is critical to seal any gaps within and between cabinets and any openings in the floor or duct. CPI offers a number of options, including Snap-In Filler Panels and Raised Floor Grommets.

Snap-In Filler Panels	
Part Number	Description
34537-X02	1U x 19" EIA, Pack of 50
34538-X02	2U x 19" EIA, Pack of 50

Note: X=color: 7=Black, E=Glacier White. Also sold individually.



Raised Floor Grommets	
Part Number	Description
13671-001	Raised Floor Grommets, Each, Black
13671-002	Raised Floor Grommets, Pack of 10, Black



HOW TO GET STARTED

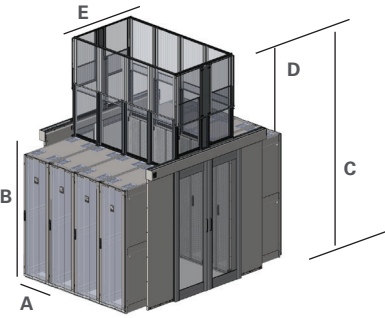
The specific combination of components needed to create a complete Adjustable Containment Solution (ACS) depends on a number of factors, including room layout, ceiling height and what size of cabinets models are selected.

To ensure you have a complete solution that addresses site- and cabinet-specific requirements, please contact CPI Technical Support for assistance developing a Bill of Materials (BOM).

Based on your input, CPI Technical Support will propose a complete solution with a drawing and detailed BOM. They will take the time to explain each selection, so you have a complete understanding of how CPI solutions will provide desired results.

Example Bill Of Materials (BOM) / Elevate™ Adjustable Containment Solution			
Item	Part Number	Description	Qty.
1	14500-701	Adjustable Containment Solution Panel*	10
2	14625-701	Adjustable Containment Solution End of Row Panel	2
3	32770-702	Aisle Containment Double Door Assembly, Black with Anodized Door Frames	2
4	32805-702	Door Mounting Bracket Kit, 3”H (75 mm)	2
Recommended Accessories			
	32875-701	Installation Template, Aisle Containment Double Door Assembly	1
	14590-001	Adjustable Containment Solution Brush Kit	1
	34537-702	Snap-In Filler Panel, 1U x 19”EIA, Black, Pack of 50	2
	34538-702	Snap-In Filler Panel, 2U x 19”EIA, Black, Pack of 50	2
	13671-002	Raised Floor Grommet, 10 Pack, Black	2

Notes: *Consider each cabinet width while ordering individual panels in your POD. Example calculations for determining the correct ACS kit part number are listed below the image. Recommended Accessories include Thermal Management Accessories to seal the gaps within and around Cabinets. Contact CPI Technical Support (techsupport@chatsworth.com) to develop a BOM for your site.



Identify the width of each cabinet in the containment POD (Dim A)

- Match the cabinet width to panel width for each cabinet size

Calculate Dim D:

- Identify the cabinet height dimensions (Dim B)
- Identify the floor to ceiling height (Dim C)
- Calculate (Dim D) for correct panel range
 - $\text{Dim D} = \text{Dim C} - \text{Dim B}$

Select Dim E based on required aisle width

- Rear frame aligned OR mid-frame span

Based on Calculation:

- Order 1 Adjustable Panel per cabinet
- Order 2 End of Row Containment Panels

All suggestions and performance statements are based on using an overall approach to airflow containment through the use of CPI Products and solutions. For more information about CPI's Aisle Containment Services or products, call 800-834-4969, email techsupport@chatsworth.com or contact your Regional Sales Manager.

[chatsworth.com](https://www.chatsworth.com)

techsupport@chatsworth.com

800-834-4969