



Oberon™ Wi-Tile™ Ceiling Enclosures 1075 Series

Locking Recessed Hard Ceiling Wireless Access Point Enclosures

KEY FEATURES

- **Use in Behavioral Health Applications** – Ligature-resistant design on dome door models includes a screw-activated latching mechanism to secure the enclosure to the hard-lid ceiling surface, smooth bezel and rounded corners to minimize points of sustainable attachment, and impact-resistant dome and locking door to secure equipment
- **Optimal Wireless Coverage** – Position equipment for optimal wireless coverage in hard-lid ceiling locations
- **Secure Wireless Equipment** – Physically secure and conceal wireless equipment and associated network components
- **Simplify Service** – Internal swing down mounting plate included with dome door options simplifies wireless equipment installation, maintenance and migration
- **Conceal and Blend the AP** – Dome doors are virtually transparent to wireless signals
- **Use in Plenum Spaces** – Included fire stop grommet allows cable egress/ingress while maintaining plenum ceiling rating
- **Address Infection Control concerns in Healthcare Facilities** – Lockable full enclosure back box simplifies iInfection Control Risk Assessment (ICRA) procedures by allowing access to the wireless equipment without the need to lift the ceiling tile, which helps eliminate the possible spread of airborne contaminants
- **Easy to Upgrade** – Wireless AP-specific door options are also available; doors are interchangeable to support technology changes
- **Attractive Finish** - Attractive, textured, powder-coat finish provides a quality professional installation



SPECIFICATIONS

Description	<ul style="list-style-type: none"> • Locking recessed hard ceiling enclosure designed for wireless APs with integrated antennas • For Indoor use only, in environmentally controlled areas
Includes	<ul style="list-style-type: none"> • (1) Enclosure and interchangeable door • (1) Swing down universal AP mounting plate (DOME models) • (1) Dual cable egress firestop grommet • (1) 1 in. trade size conduit connector • (1) Ceiling support wire • (2) Keys for lock • (1) Grounding screw • Wireless Access point attachment hardware • Installation instructions
Equipment Support	<ul style="list-style-type: none"> • Enclosure recesses into a hard lid ceiling to create a secure space for wireless APs and associated network components • Designed for use with pre-existing drywall, sheetrock, gypsum board, plaster and lathe ceiling ; secures to ceilings that are between 1/2" to 1" thick • Sized to fit within ceiling systems supported on 16-inch centers ; minimum space between joist is 14.5". • Secures against the hard-lid surface with a smooth bezel and screw-activated latching mechanism and toggle clamps in all four corners • Enclosure must be supported by the building structure, independent of the ceiling, per NEC paragraph 300.11. Includes hanger wire • UL listed for low voltage applications. Designed to meet NEC300-22 and 300-23 for plenum installations • Solid back-box fills opening behind wireless AP, creating an effective dust barrier to simplify ICRA compliance • 1 in. trade size knockouts on two back box walls for cable egress • Includes a firestop grommet for insertion into backbox knockouts. Large enough for two Cat 6A cables • Includes a locking, hinged, interchangeable door • Wireless AP attaches to the AP-specific door or inside the back box on a swing down panel on the dome door model

Availability: US, Canada, Latin America, Europe, Middle East & Africa



SPECIFICATIONS

Door/Lock	<ul style="list-style-type: none"> Includes a locking, fully hinged, interchangeable door Two styles of door are available: <ul style="list-style-type: none"> AP-specific door with a matching cutout and mounting bracket Dome door with universal swing down mounting bracket inside the enclosure
Equipment Space	<ul style="list-style-type: none"> Enclosure size: <ul style="list-style-type: none"> Overall (Dome Door models): 5.0"H x 17.9"W x 17.9"D (127 mm x 455 mm x 455 mm) Overall (AP-Specific Door models): 3.0"H x 17.9"W x 17.9"D (76 mm x 455 mm x 455 mm) Flange/bezel is 17.9"W x 17.9"D (455 mm x 455 mm) Backbox space: <ul style="list-style-type: none"> 2.8"H x 14.3"W x 14.3"D (71 mm x 363 mm x 363 mm) Dome space: <ul style="list-style-type: none"> 2.2"H x 11"W x 11"D (55 mm x 279 mm x 279 mm)
Installation	<ul style="list-style-type: none"> Minimum space between joists: 14.5" (368.3 mm) Ceiling thickness: 1/2" to 1" thick (12.7 mm to 25.4 mm) Support from overhead structure with included support wire
Product Weight	<ul style="list-style-type: none"> 11 lb (5.0 kg)
Load Capacity	<ul style="list-style-type: none"> Maximum weight inside enclosure is 25 lb (11.3 kg)
Certifications	<ul style="list-style-type: none"> UL listed for low voltage applications. Designed to meet NEC300-22 and 300-23 for plenum installations UL Listed, UL 2416, NWIN, File #E348543
Materials	<ul style="list-style-type: none"> Backbox: <ul style="list-style-type: none"> 16 ga. aluminum Flange: <ul style="list-style-type: none"> 18 Ga steel Door: <ul style="list-style-type: none"> 14 ga steel Dome: <ul style="list-style-type: none"> MPDOME: UL 94-5VA PVC/ABS white opaque impact-resistant plastic MTDOME: UL 94-5VA PVC/ABS clear translucent impact-resistant plastic
Finish	<ul style="list-style-type: none"> Backbox: <ul style="list-style-type: none"> Brushed aluminum Flange and Door: <ul style="list-style-type: none"> White, textured powder coat paint

PRODUCT FEATURES

Locking Recessed Hard Ceiling Access Point Enclosures

The 1075 series can be used in any interior application with hard-lid ceilings to recess and secure Wi-Fi APs. It features a smooth exterior design with beveled edges and rounded corners and a locking, Impact-resistant dome door that hides the AP. Alternately, several AP-specific doors are also available. It will fit ceilings with 16-inch support spacing and provides the largest backbox for this application. Mounting hardware is recessed at the corners and secures the enclosure tightly to the ceiling. It has a full backbox that creates a suitable dust barrier to the space above the ceiling and a firestop grommet to seal the opening in the backbox for cables.

These features allow the 1075 series to be used in plenum ceiling spaces, to address infection control risk assessment (ICRA) procedures in healthcare facilities or to address ligature-resistant design requirements in behavioral healthcare facilities. Use the dome door options in behavioral healthcare facilities.

ORDERING INFORMATION

Oberon Wireless Enclosure 1075 Series				
Product Number	Door Style	Access Point Vendor	Access Point Model	Shipping Weight lb (kg)
1075-MPDOME	Opaque White Dome	Various	Various	15 (6.8)
1075-MTDOME	Translucent Clear Dome	Various	Various	15 (6.8)
1075-CW9166	AP-Specific	Cisco	CW9166L, CW9164L	15 (6.8)
1075-COAP9136	AP-Specific	Cisco	9136AXI	15 (6.8)
1075-COAP9130	AP-Specific	Cisco	9130AXI	15 (6.8)
1075-COAP9120	AP-Specific	Cisco	9120AXI	15 (6.8)
1075-ARAP655	AP-Specific	Aruba	AP-655	15 (6.8)
1075-ARAP635	AP-Specific	Aruba	AP-635	15 (6.8)
1075-ARAP555	AP-Specific	Aruba	AP-555	15 (6.8)
1075-ARAP535	AP-Specific	Aruba	AP-535	15 (6.8)
1075-MR56	AP-Specific	Meraki	MR56, MR55	15 (6.8)
1075-ND	No Door	N/A	N/A	15 (6.8)

Note: Use 1075-MPDOME or 1075-MTDOME models for behavioral health applications.



Model 1075-MPDOME shown

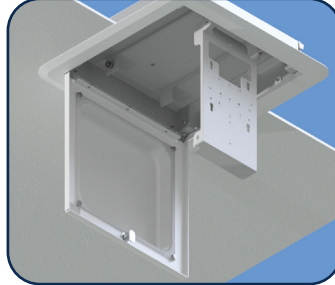
DOME ORDERING OPTIONS

- Dome doors are available in opaque white or clear translucent finish.



Model 1075-MPDOME

- Dome door models include an internal universal swing panel to attach APs. The swing panel is punched with hole patterns to accept most Cisco and Aruba APs. It also accepts mounting brackets that align with single-gang hole spacing.



Model 1075-MTDOME open

- When open, the swing panel positions the AP for easy access for maintenance or replacement



Model 1075-MPDOME with a Cisco C9136AXI Access Point installed



Model 1075-MTDOME



AP-Specific doors are also available.



Model 1075-MPDOME with an Aruba Networks AP-635 Access Point installed

ACCESSORIES

Oberon™ Retrofit Doors 1075

Interchangeable doors simplify access point upgrades and replacements. This is a retrofit door for the Oberon Wi-Tile Ceiling Enclosures 1075.

Oberon Wireless Enclosure 1075 Series Retrofit Doors				
Product Number	Door Style	Access Point Vendor	Access Point Model	Shipping Weight lb (kg)
38-1075-MPDOME	Opaque White Dome	Various	Various	3 (1.4)
38-1075-MTDOME	Translucent Clear Dome	Various	Various	3 (1.4)
38-1075-CW9166	AP-Specific	Cisco	CW9166I, CW9164I	3 (1.4)
38-1075-COAP9136	AP-Specific	Cisco	9136AXI	3 (1.4)
38-1075-COAP9130	AP-Specific	Cisco	9130AXI	3 (1.4)
38-1075-COAP9120	AP-Specific	Cisco	9120AXI	3 (1.4)
38-1075-ARAP655	AP-Specific	Aruba	AP-655	3 (1.4)
38-1075-ARAP635	AP-Specific	Aruba	AP-635	3 (1.4)
38-1075-ARAP555	AP-Specific	Aruba	AP-555	13 (1.4)
38-1075-ARAP535	AP-Specific	Aruba	AP-535	3 (1.4)
38-1075-MR56	AP-Specific	Meraki	MR56, MR55	3 (1.4)
1075-ND	No Door	N/A	N/A	3 (1.4)

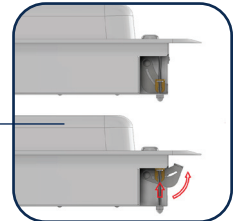
Note: 38-1075-MPDOME or 38-1075-MTDOME models include a universal swing down panel to attach the AP. AP-Specific doors have an AP mounting bracket integrated into the door.

chatsworth.com

customercare@oberonwireless.com

877-867-2312

Corner Bracket
Latch detail



Latch Mechanism for
tight seal

Included fire stop
grommet provides
a sealed cable
pass-through

